



# An alcoholic man with weird walking disorder



ESIM 2010

France

Guillemette THOMAS

Florian PASQUET



# Clinical Case

- 64 years-old man
- Past medical history:
  - Weaned Chronic Alcoholism
  - Tabagism
- Emergency room:
  - Weakness, fever 38° C
  - Subacute Walking disorder since one month
  - Vomiting

# Clinical Case

- Neurological examination:
  - Ataxia
  - Dysmetria
  - Nystagmus
  - Dysarthria



# Clinical Case

- Blood count, liver enzymes, kidney function tests : normal
- Biological inflammation (CRP : 64mg/L, normal < 5)
- TSH, vitamin B12 : normal

# Cerebellar syndrome + french

- Cheese intoxication?



# Cerebellar syndrome + alcoholism

- Chronic alcoholism with cerebellar atrophy ?
- Wernicke's encephalitis ?

*... but weaned alcoholism since 30 years...*

# Cerebellar syndrome + tabagism

- Stroke ?

*...No ischemic sign on RMI...*

# Neurologic disorders + fever

- Infectious diseases ?
  - Virus: VZ virus, Epstein Barr virus, Herpes simplex virus, HIV...
  - Bacteria : Listeria, Syphilis...

- *Exhaustive viral and bacterial serologies : negative*

- *Cerebrospinal fluid :*

✓ *Elevated protein levels (0,65g/L, N<0,5) without oligoclonal bands*

✓ *PCR HSV, VZ virus... negative*

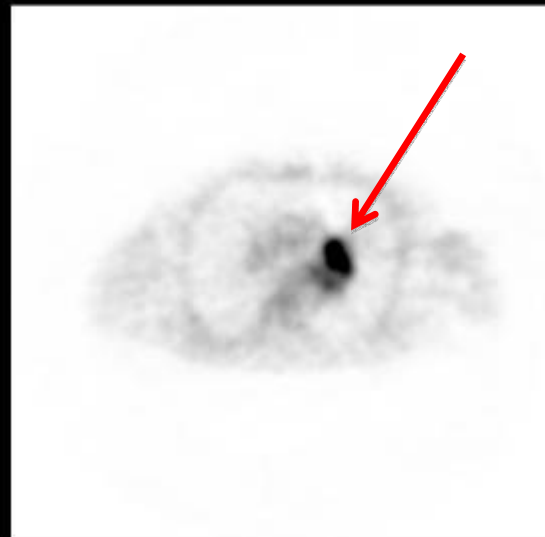
# Cerebellar syndrome + tabagism + high PS

- Lung cancer with cerebellar metastasis?

*Left hilar tumour on CT scan*  
*Lung biopsy: small cell lung cancer*



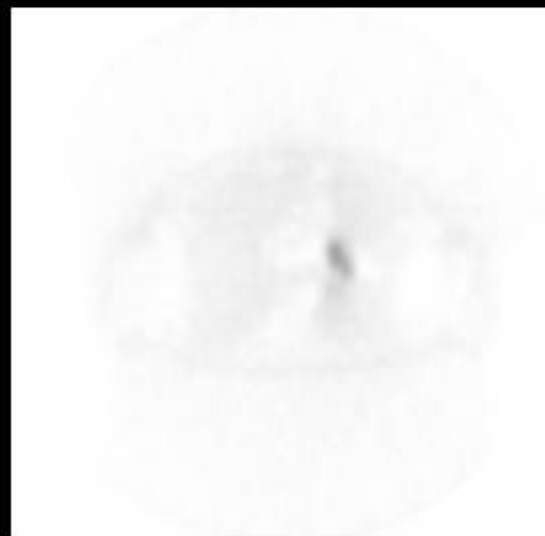
CT Transaxials



PET Transaxials



Fused Transaxials



PET HOC Transaxials

# Cerebellar syndrome + tabagism + high PS

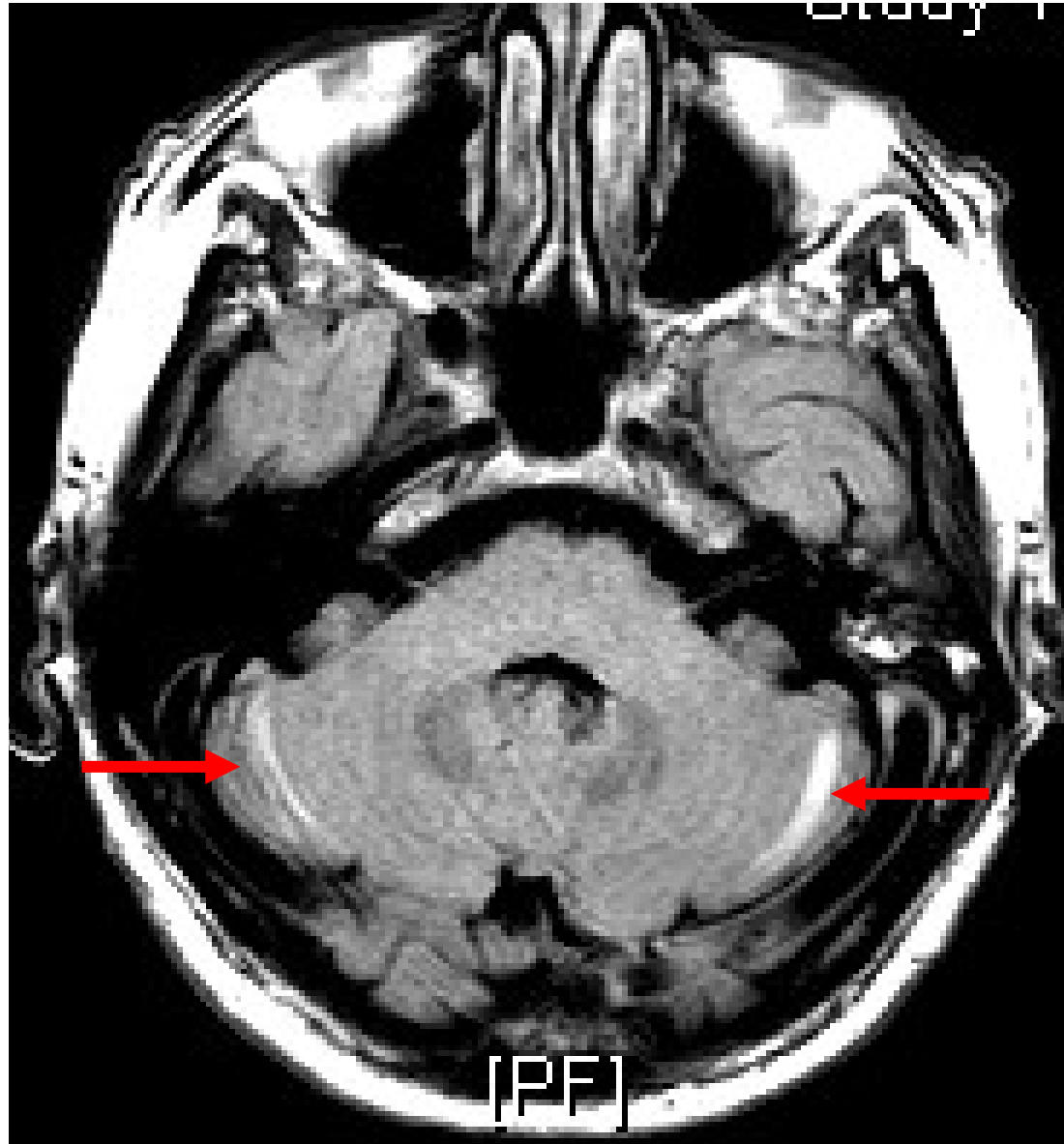
- Lung cancer with cerebellar metastasis?

*Left hilar tumour on CT scan*

*Lung biopsy: small cell lung cancer*

*But no : no cerebellar tumour on RMI !*

# Cerebral RMI



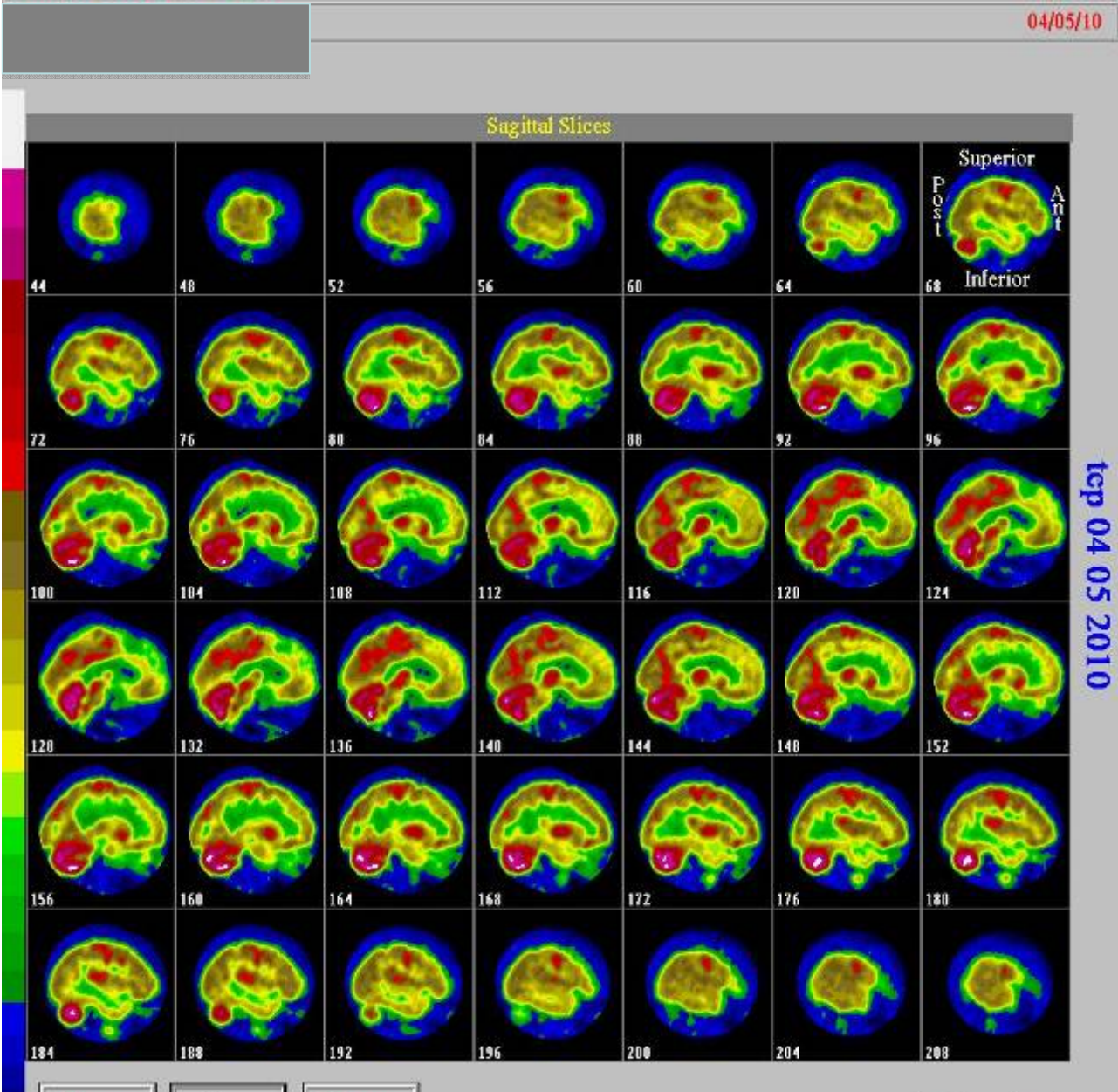
# Cerebellar syndrome + lung cancer without metastasis

- Paraneoplastic neurologic syndrome ?

*Anti Hu, Ri, Yo antibodies : negative*

*Presence of anti cerebellar Bergmann glia Ab*

# FDG - PET Scan



# Final diagnosis

***Small cell lung cancer***

***Complicated with cerebellar  
degeneration***

***With uncommon onconeural antibodies***

# Treatment

- Treatment of paraneoplastic syndrome: immunotherapy
  - Intravenous immunoglobulins
  - Cyclophosphamide: not done due to current urinary infection
- Cure the underlying cancer: Small lung cell cancer
  - Chemotherapy

# Paraneoplastic Neurological Syndromes

- Paraneoplastic Encephalomyelitis (PEM)
- Limbic encephalitis (LE)
- Subacute Cerebellar ataxia
- Lambert-Eaton myasthenic syndrome
- Subacute sensory neuronopathy
- Opsoclonus-myoclonus
- Chronic gastrointestinal pseudo obstruction

# KEY POINTS

- < 1 % of cancer
- In 60 to 65 % of cases, PNS can be found before any diagnosis of cancer
- Paraneoplastic antibody : Se = 50%, Sp > 90 %
- Interest of FDG-PET for:
  - Detection of the occult malignant focus
  - Assessment of the functional consequences of the disease in the brain